



Donor

Global Affairs Canada



Period

Jul 2017 to Mar 2022



Targeted Districts

Terego and Madi Okoll (Rhino and IMVEPI settlement)



Total Budget

\$5,367, 842



Reach

501,591 people

Direct Reach - 123,156
(M 47,415 • F 76,741)

Indirect Reach - 378,435
(M 145,697 • F 232,738)



Partners

West Nile Community Action for Rural Development (WN-CARD)



CMP

CARE Canada



SDG



The Central Problem

The refugees in West Nile remain amongst the most vulnerable population with limited capacities and opportunities to cope with the socio-economic impacts of both the crisis and Covid 19 pandemic. Access and quality of SRMH services for pregnant and lactating women and girls in the humanitarian context remains a challenge and is exacerbated by COVID 19. Gaps still exist in Health service delivery which directly impact on quality of SRMH services in the face of increasing maternal mortality. Additionally, Women's voice and participation in humanitarian decision making is often an act of tokenism and remains low due to their literacy levels, and confidence in their abilities to lead. Lastly, the reduction in food rations to 50% and the negative impact of climate change have posed a great food security that have increased the vulnerability of the refugees.

Solution

- GAC 4 project aims to provide Protection, Sexual Reproductive Maternal Health and Livelihood intervention.
- Prevent and respond to Gender based violence by providing appropriate and timely protection-specific services.
- The project will support, mentor and build capacity for the community Based

organisation and CARE staff to adopt women leadership methodologies and continue support to the women groups in the settlements.

- Additionally, the project will strengthen the health system to be able to provide quality lifesaving SRMH services through capacity building, critical human resource, ambulance service, supplies of commodities, strengthening governance, technical support supervision and creating awareness. The project will use community structures like community-based facilitators/trainers, peer educators, community action and safety action groups, male action groups to create more impact and ensure sustainability.

Expected Results

- The expected long term outcome for the project is to have increased and equitable use of gender-responsive assistance by crisis-affected people to meet basic protection, SRMH, and WLiE needs in Rhino Camp Settlement and Imvepi Settlement in Terego and Madi-Okollo Districts.
- The projects also expect to have an increased and more equitable access to quality, appropriate and timely protection and GBV response

and SRMH services and have access to participation in humanitarian decision-making by crisis-affected women and girls.

Project Innovations

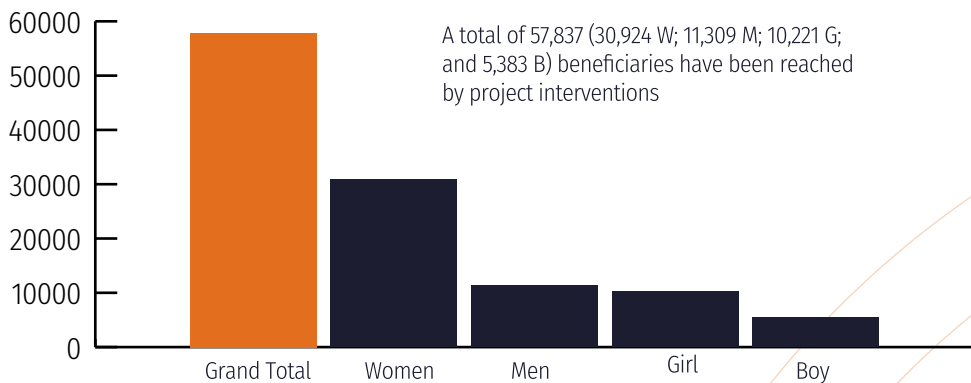
- The project is using the community score card approach an accountability tool that brings together community members (Including Service Users), Service Providers, and Local Government to identify service utilization and provision challenges, to mutually generate solutions, and to work in partnership to implement and track the effectiveness of those solutions in an ongoing process of improvement empower service users.

- The project is also using the Women leadership in emergency

Project Data

The project is implemented in two districts (Terego and Madi Okoll) and 2 settlements Rhino and Imvepi settlements with a budget of \$1,250,000 CAD. It's a 1-year project which started on the 1st April 2021 and ends on 31st March 2022. The project targets 31,890 individuals (M 8,655, W 8,740, B 5765, G 8,730B) from both host and refugee communities.

Achievements



68

Supported 68 GBV survivors with client centered protection response services.

Established and trained community structures to support creating impact in the community



80

Community based facilitators



10

youth clubs



09

women and girl's groups



48

Community safety action groups



40

SASA activists

02

Community based trainers



143

Role model men and boys

08

Health unit management committees

58

Centre Management Committee members for women and youth centers

193

Trained Stakeholders Partners and Staff

Trained 193 of stakeholders, Partners and staff trained on Delivering GBV survivor focused services for Women and Girls.

27

Trained Peer Educators

Trained 27 peer educators on Adolescent Reproductive Health reaching out to 3,434 adolescents with information on ASRH.

11

Village Saving and Loan Associations Trained and Supported

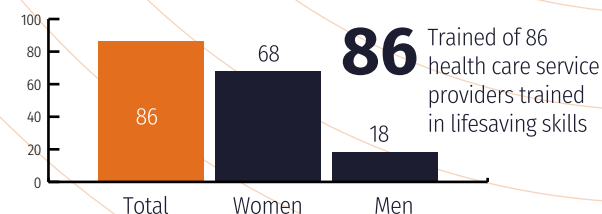
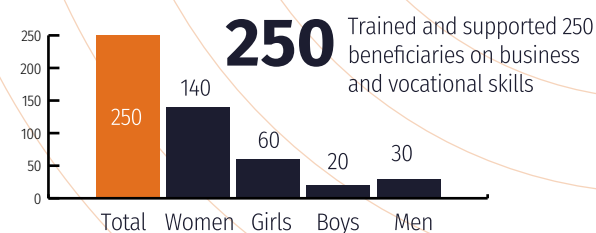
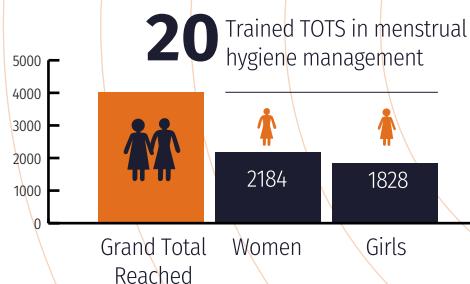
- Recruited and deployed 6 critical staff in Omugo and Rhino Camp H/IV to provide comprehensive emergency Obstetric and Neonatal Care.
- Provided 1 ambulance to Rhino settlement which has so far supported and saved life of 457 (302 F, 155 M) referrals.
- Procured and distributed 358 dignity kits to vulnerable women who deliver in the health facility.

93

Women in Leadership Empowered

Built capacity of 93 women in leadership to meaningfully participate in humanitarian decision making spaces.

- Procured and distributed PPEs and other supplies to 8 health facilities in Rhino and Imvepi settlements.
- Trained 24 Functional Adult Literacy teachers. To date a total of 255 (150W, 55G, 56M) received capacity development through FAL classes in imvepi and Rhino settlements.
- Recruited and deployed 6 critical cadre healthcare staff (1 medical officer, 2 midwives, 2 theatre attendants and 1 ambulance driver) to Omugo and Rhino camp H/C IV.



Global Affairs Canada

